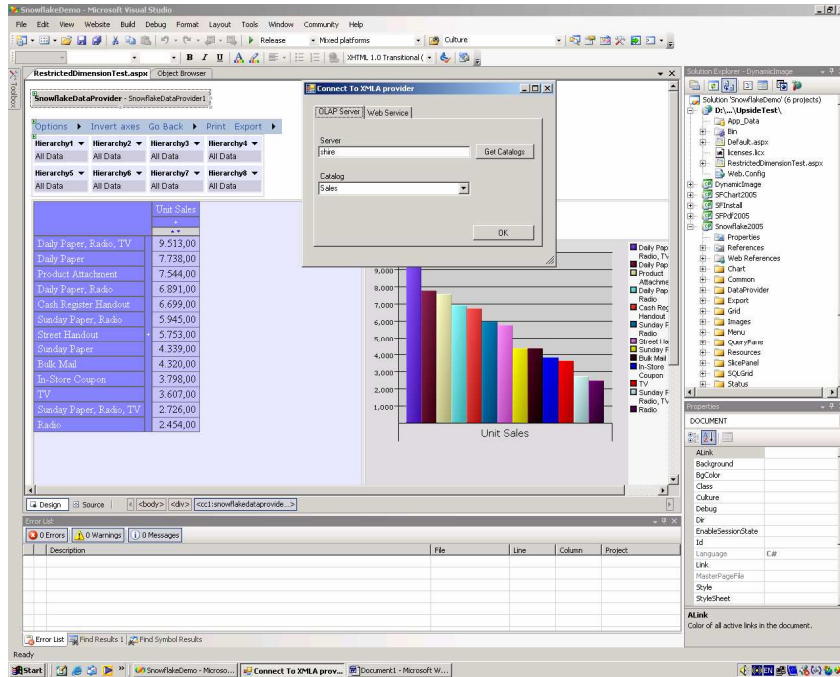




Snowflake.net - the leading XML/A asp.net control



Snowflake.net in VS2005 asp.net environment

Features

Full XMLA Support - access OLAP and Relational Sources, through XML for Analysis web services.

With strong support from the companies such as Microsoft, Hyperion and SAS, XMLA (XML for Analysis - www.xmla.org) is bound to revolutionize the business intelligence field. Intellimerce has been there since the beginning, with Snowflake.net 1.0 release in May of 2002. XMLA provides unified view of all analytical sources, be it OLAP, data mining or relational. Set the url to the analysis services, desired catalogue, and the startup mdx query in the Snowflake.net properties at design time and you have created an analytical web application.

Grid capabilities - provide the full-featured set of analytical actions:

- * Expand, collapse, add, remove dimensions
- * Choose measures to be displayed
- * Apply filters for dimension members
- * Pivot
- * Zoom: drill-in while filtering
- * Sort within current hierarchy selection or across whole hierarchy
- * Paging option: set number of items per page
- * Depth coloring: background on drilled rows and columns increases in shade as you drill deeper into the dimensions
- * Hide columns or rows
- * Configurable Grid Scrolling

Powerful menu for browsing, adding and replacing dimensions, slice selection - provides access to many elements of an analytical application:

- * Access to whole dimension drill-outs
- * Export to HTML, CSV, PDF
- * Pivot
- * Printer friendly view access
- * Return to original query
- * Choose the chart type, page size

Versatile slice controls:

- * Edit slice: browse dimensions and set filters
- * Current slice: once the slice is applied the slice control for that dimension displays the applied slice
- * Support for multi-select in slicers

* Take charge and develop next generation of business intelligence applications that leverage the power of web services, and do it all in minutes.

* Snowflake.net provides developers with unprecedented power in a 100% managed ASP.Net business intelligence control with access to XML for Analysis web services.

* Snowflake.net supports access to both multi-dimensional (OLAP) and relational database queries through XML/A.

* With a few clicks within your Visual Studio.net development environment you can generate analytical web application for your users (IE 5, Netscape 6 and up).

* Robust & rich end user experience is provided through the support for synchronized chart and grid views.

New in version 5.0:

- Support for VS2005
- Support for SSAS2005 through native XML/A
- Support for ADOMD.net
- New architecture of a set of co-operating components
- New DataProvider with connectivity wizard
- Export to HTML, CSV, PDF
- Save State through Serialization Capabilities
- Actions Support
- Dimension Search Capabilities
- Skin Support (css)
- Configurable Grid Scrolling
- Advanced RestrictedDimension Support

Other Features:

- Comprehensive Online Help
- Multi-member Select in Slicers
- Http Compression for XML/A
- ASP.net State Server Support
- Context Sensitive Menus
- Drill-through
- Advanced UI Slicers
- Row Sorting
- Events - Before and After UI
- Subtotals
- Remove Dimension from Axis
- XML/A Resultset
- Support for more than 10 languages/cultures



Charting with 15 different chart types and active drill-down in, charts and relative positioning - You can perform drill-down analysis directly in the Snowflake.net charts, but you can also do much more:

- * Choose from 15 different chart display types including 3d bar, column and pie charts
- * Active zoom regions on the chart allow drill-in capability
- * Relative positioning of the chart with respect to the grid (top, bottom, left, right)
- * Dynamic labeling and resizing

Synchronized component architecture - Snowflake.net control is designed based on the MVC (model-view-controller) paradigm. The grid and chart view are synchronized at all times through the DataProvider. component You can have multiple grid and charts with different configurations for the same data provider. A drill-down in the grid view automatically changes the chart display and vice-versa.

Multi-language support - With internationalization built in from start, language support is easy. Snowflake.net now supports 10 languages and new ones will be added on an ongoing basis.

Fine-grained display control - You can control practically every display aspect of the control, including colors and fonts for all grid elements through the design-time properties. At the highest level, you can choose to display menu, grid and chart independently. These options allow the developer to take full control over the display if desired. All design time properties are available at run-time as well. You can also control these properties in once central location by using a style sheet (css). Printing is done through the print optimized view that presents only relevant information in a new page.

Print view - optimized print view removes the menu and other non-required elements prior to printing.

Security control - Snowflake.net provides following security configuration options:

- * Unauthenticated: best used during development only.
- * Integrated Windows Security with Users Credentials: on authenticated sites the users credentials are passed to the analysis server so that you can implement role specific dimension and cell rights control.
- * Integrated Windows Security with Credentials: with this option all users will be impersonated through the specified user id in the configuration file.
- * Impersonation for firewall tunneling.

RestrictedDimension API- Snowflake.net provides capabilities of managing security beyond those available through SQL Server. You can control what dimensions are visible to the users and at what level through the Snowflake.net RestrictedDimension API.

Reuse

Snowflake allows users to tap integrated analytical services from database vendors through a simple to use web interface with sub-second response times. Users can perform drill-down analysis, manage their queries, export information into spreadsheets and share information with other users all within their browser without any installation requirements.

Extranets, Portals and Dashboards

Looking for a solution that provides analytical services to clients and partners? Snowflake is the tool for extranet analytical deployments.

Zero footprint (no installations) browser access provides instant karma experience to your users. Snowflake.net provides an extremely easy way of providing access for XMLA services to end-users, be it within the company or outside. With a few clicks you can generate fully functional analytical clients on ASP.net by leveraging the power of the Snowflake.net - XMLA ASP.net control.

Price is right

- * Zero cost deployment
- * Reuse of available analytical services from database vendors
- * Incredible ease of implementation

All of these factors result in the highest return on investment possible. Snowflake was designed with small and medium size, cost conscious companies in mind so you know that the price is right. Give your developers a break and save man-months in effort.

Architecture

Snowflake is deployed within the asp.net layer. It scales to the requirements of thousands of users (analytical server capabilities being the bottle neck). Seamless integration is provided for Microsoft .net server family.

Licensing Options

Choose from 2 licensing options:

- * **Per server/developer licensing** – for each production server or developer, whatever number is greater, you require one license. MSRP:\$999
- * **Enterprise licensing** – company wide enterprise license, unlimited number of developers, servers, CPUs per server MSRP:\$4995

You can serve unlimited number of clients from the pages that incorporate Snowflake.net. You may not use snowflake.net as part of a web service to companies outside of your own.

Source Included

For enterprise users we provide Intellimerce Enterprise Source license, giving you full access to all the source code.

1st Year Maintenance Included

For enterprise users we provide Intellimerce Maintenance services, giving you access to support by phone, email and online. For subsequent years you can purchase Intellimerce Enterprise Maintenance at MSRP \$999.

Requirements

1. Server requirements:

- * Windows 2003 Server, 2000 Server, Windows XP, Windows NT Server with SP6
- * IIS installed
- * .net Framework installed
- * Access to web service implementing XML for Analysis data provider
- * SQL Server and Analysis Server sp3 applied
- * XMLA for Analysis provider - Snowflake control is tested with Microsoft XMLA provider 1.1 and SSAS2005 XMLA provider

2. Client browser requirements:

- * IE >= 5.0, Netscape Navigator >=6

3. Web application requirements:

- * ViewState enabled

4. Developer requirements: Visual Studio.net (one can implement asp.net pages without Visual Studio.net but it makes it a whole lot easier)

